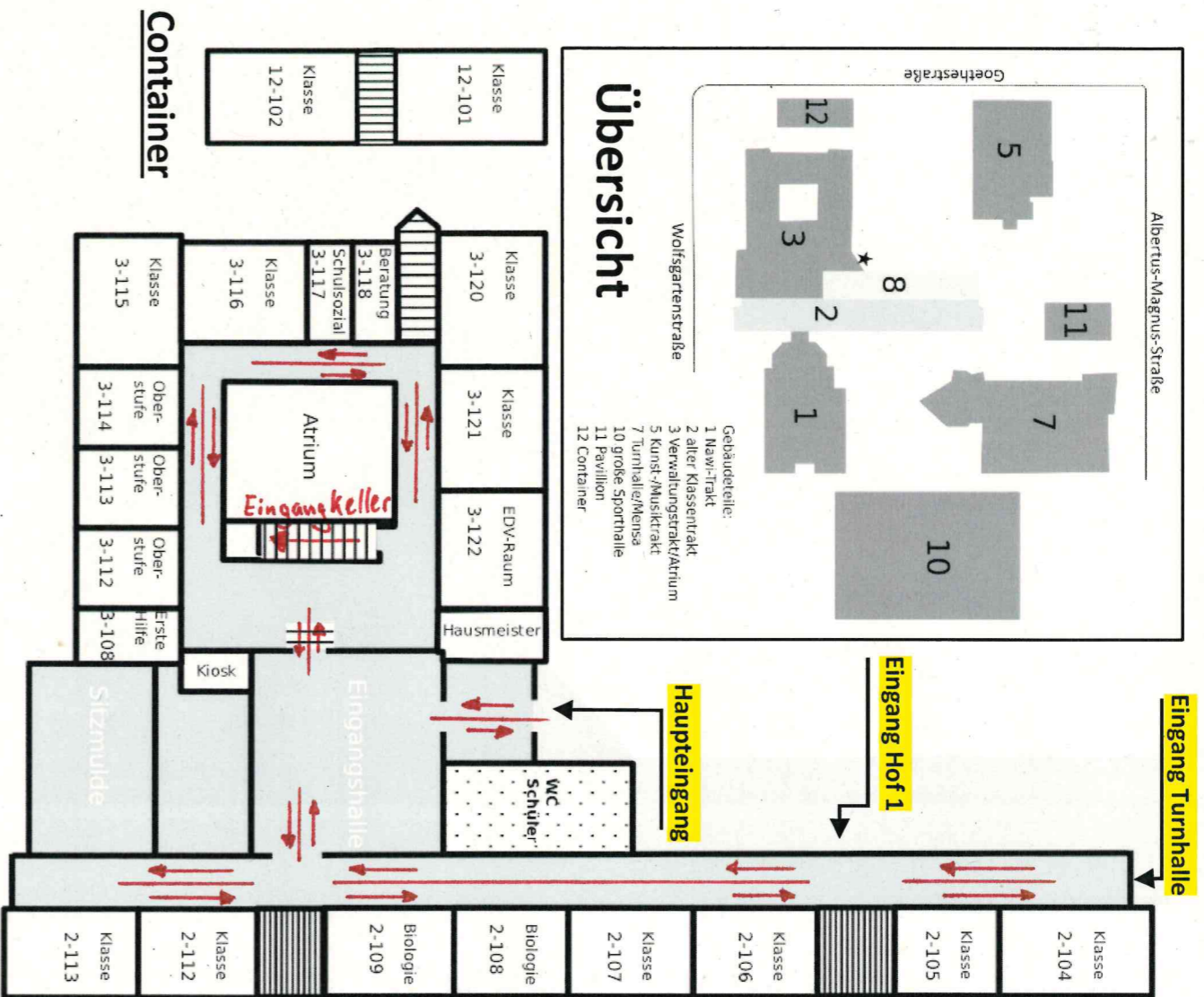
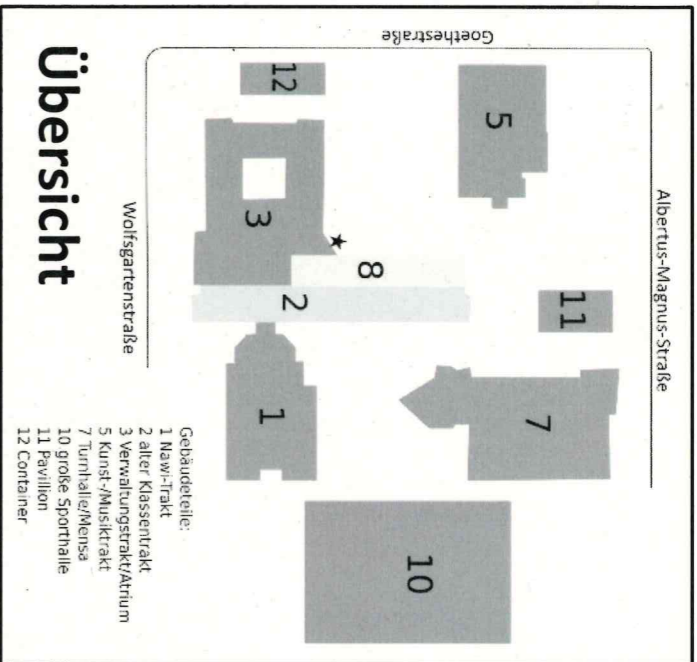


# Gebäude- und Raumplan der Dreieichschule

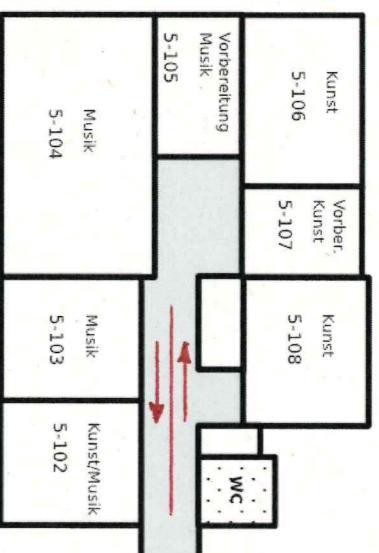
— *Wegeplan* —



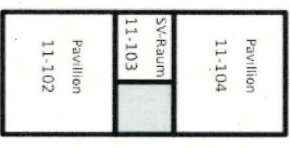
**Dreieichschule**  
Langen



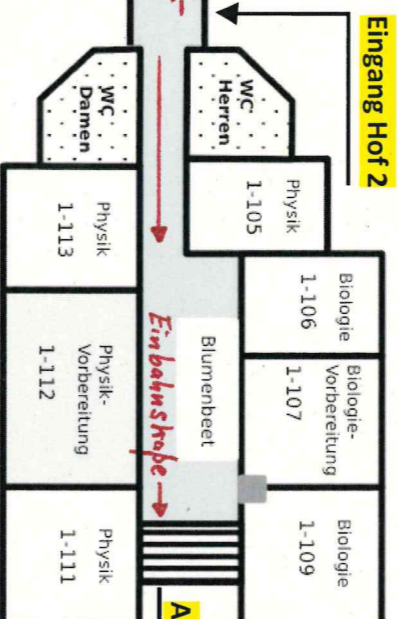
## Kunst-Musik-Trakt



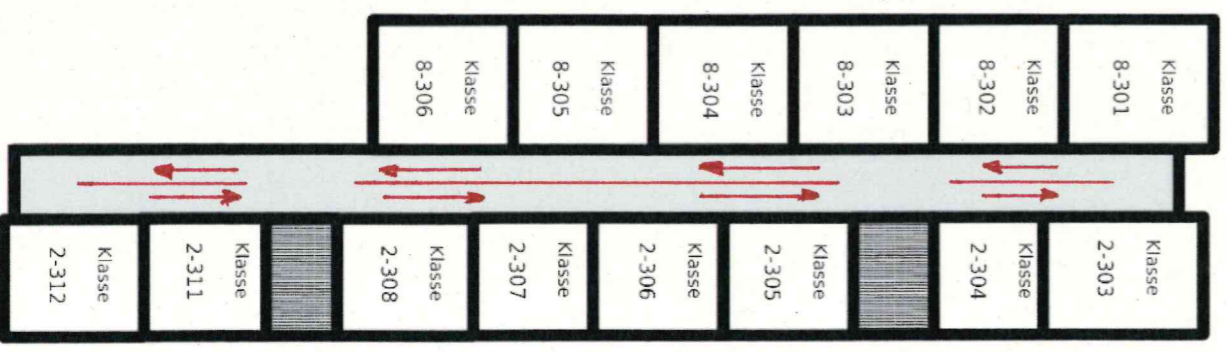
## Pavillon



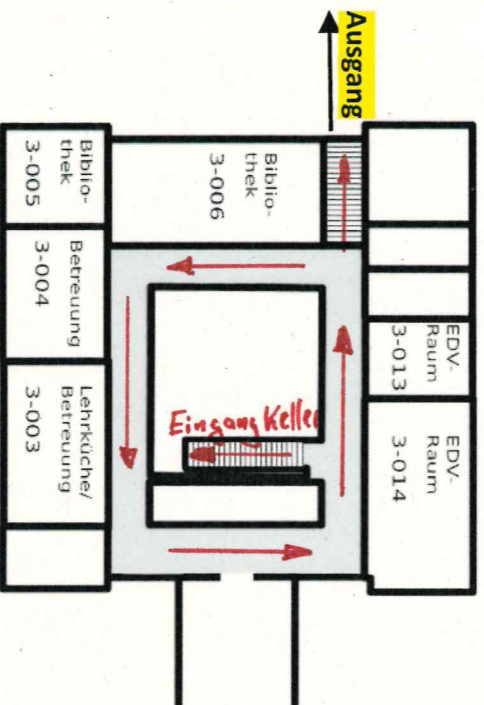
## Hauptgebäude Erdgeschoss



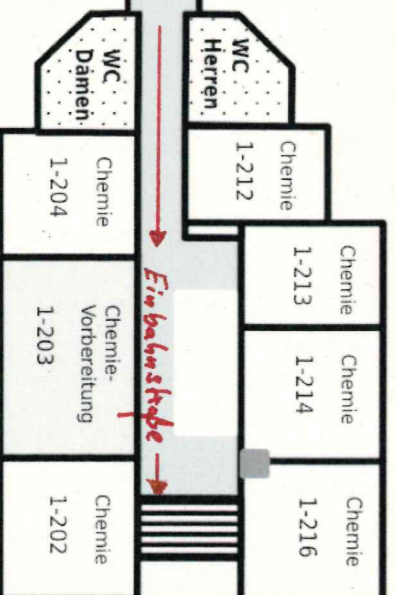
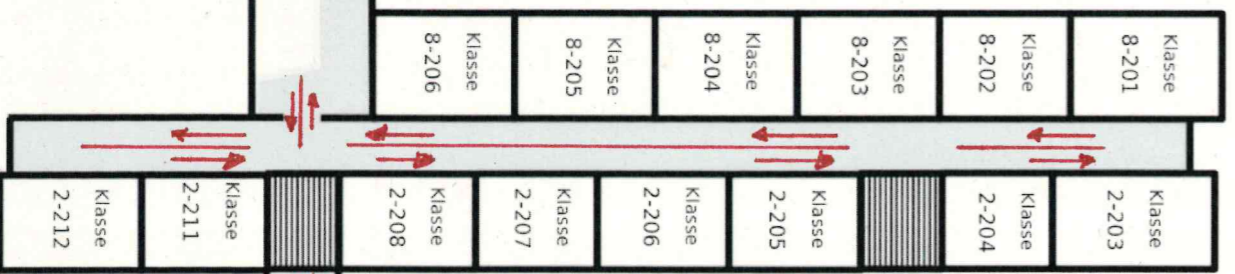
## Hauptgebäude 2. Stock



## Hauptgebäude Keller



## Hauptgebäude 1. Stock



## Container

